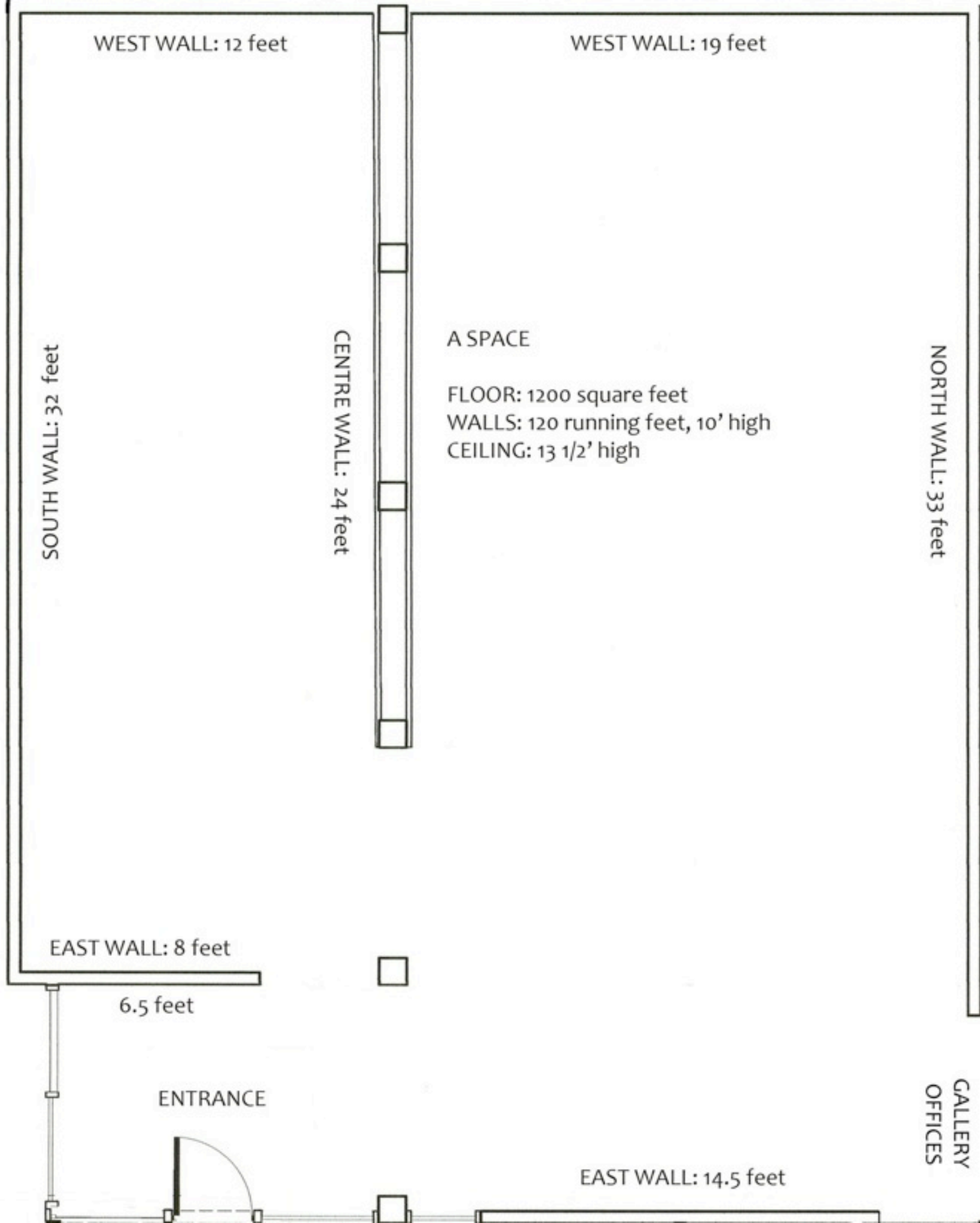




FOUR VITRINES: 4X6 feet

HALLWAY



WEST WALL: 12 feet

WEST WALL: 19 feet

SOUTH WALL: 32 feet

CENTRE WALL: 24 feet

A SPACE

FLOOR: 1200 square feet  
WALLS: 120 running feet, 10' high  
CEILING: 13 1/2' high

NORTH WALL: 33 feet

EAST WALL: 8 feet

6.5 feet

ENTRANCE

EAST WALL: 14.5 feet

GALLERY  
OFFICES